



keonn RFID
Systems

AdvanPrint™

Cloud-based RFID encoding
& printing system





Video

Benefits:

- Easy, fast and effective printing and encoding
- Connected to the cloud
- No need of a local computer nor local software
- Prints anywhere
- Convenient to manage from any location
- Plug and play

Applications:

- Retail stores
- Distribution centers
- Libraries
- Hospitals
- Warehouses
- Factories
- Other spaces

Product overview

AdvanPrint is a **cloud-based RFID encoding and printing system**, that comprises 4 elements:

- RFID printer
- AdvanScan handheld reader or a conventional computer (sold separately)
- AdvanPrint software module (installed in AdvanScan or in a computer)
- AdvanCloud cloud-based software

AdvanPrint is optimized to accurately and efficiently **print and encode labels** for multiple tracking applications.

AdvanPrint is **easy and quick** to manage from **any location around the globe** through [AdvanCloud](#) (cloud based software). It prints and encodes hundreds or thousands of RFID tags at retail stores, offices, distribution centers, warehouses, or other spaces.

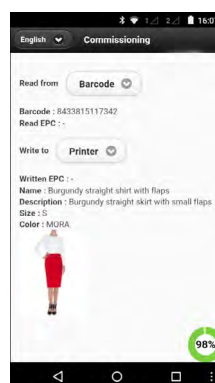
AdvanPrint offers a **complete encoding solution**.

It can be managed with the AdvanScan handheld reader, or with a conventional computer.

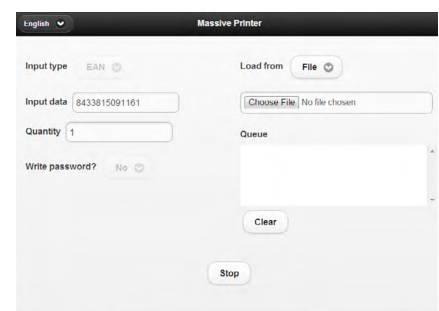
Product features

AdvanPrint is plug & play. It does not require any external computer, nor any installation. It only needs to be powered and connected to WiFi or to Ethernet, and it starts printing and encoding tags.

With AdvanScan (Android)



With a computer (Windows)



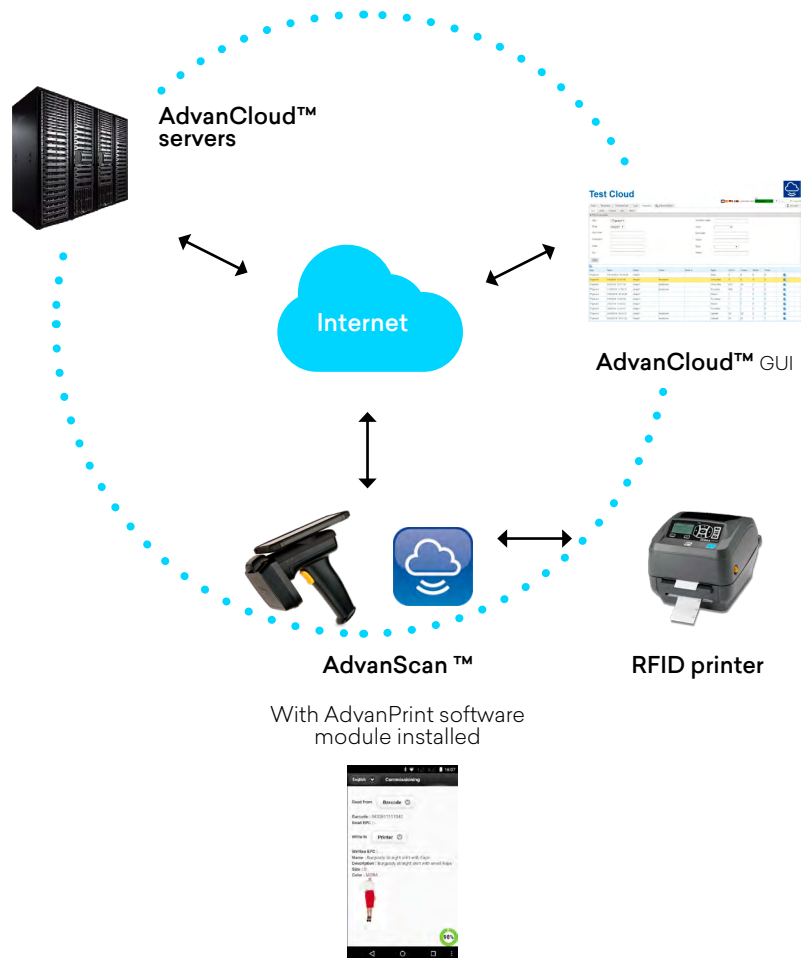
Process when managed with AdvanScan



1. The user opens the AdvanPrint software module in AdvanScan.
2. With AdvanScan, the user scans the barcode of an item, or reads the RFID tag of an item, or writes manually the code of an item.
3. AdvanScan retrieves the information of the scanned item from AdvanCloud (size, price, composition, etc.).
4. AdvanScan sends this information to the RFID printer.
5. The RFID tag is printed and encoded.
6. AdvanScan shows the information of the encoded items on its screen: name of the item, description, size, image, etc.



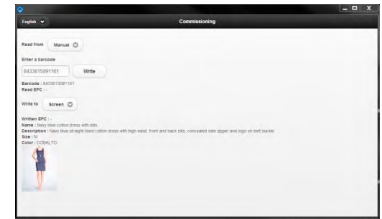
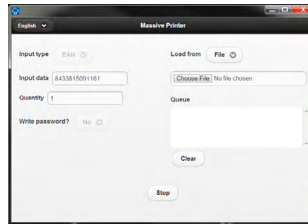
Scheme of operation when managed with AdvanScan



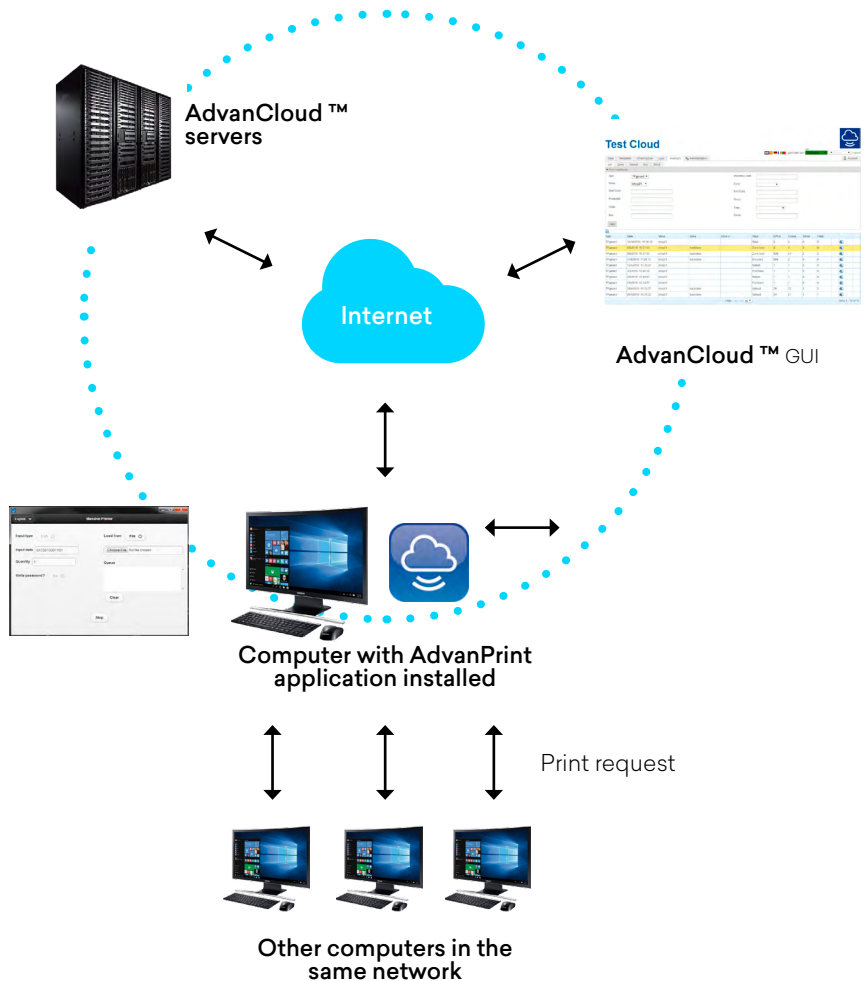
Process when managed with a computer



1. The user opens the AdvanPrint software in the computer where it is installed, or sends print commands from any other computer in the same network.
2. The user can select to print individual labels, or can print a large set of labels (by dragging the codes, by loading from a file or by loading from a URL).
3. AdvanPrint retrieves the information of the selected items from AdvanCloud (size, price, composition, etc.).
4. AdvanPrint sends this information to the RFID printer.
5. The RFID tags are printed and encoded.
6. AdvanPrint shows the information of the encoded items on its screen: name of the item, description, size, image, etc.



Scheme of operation when managed with a computer



Compatible RFID printers

AdvanPrint is available for 3 printer models:

- AdvanPrint small (Zebra ZD500r) for retail stores, small distribution centres, libraries, etc.
- AdvanPrint large (Zebra ZT411 and SATO CL4NX 203) for industrial environments (distribution centres, warehouses, factories, etc.)



Specifications AdvanPrint small (Zebra ZD500r)

Air Protocol Interface	EPC global UHF Class 1 Gen 2 / ISO 18000-6C
Available regions	Europe, USA, Canada, Brazil, Mexico, Japan, China, Asia-Pacific, Middle East, and more
Resolution	203 dpi/8 dots per mm 300 dpi/12 dots per mm
Memory	128 MB Std memory (4 MB user available) 256 MB Std Flash memory (56 MB user available)
Maximum Print Speed	152 mm per second (200 dpi) 102 mm per second (300 dpi)
Print methods	Thermal transfer and direct thermal
Connection	Wi-Fi and Ethernet
Temperature	+ 5 °C to + 41 °C
Size	193 mm x 191 mm x 254 mm (7.6 in x 27.6 in x 2.7 in)
Weight	2.2 kg (77.6 oz)

Specifications AdvanPrint large (Zebra ZT411)

Air Protocol Interface	EPC global UHF Class 1 Gen 2 / ISO 18000-6C
Supported regions	Europe, USA, Canada, Brazil, Mexico, Japan, China, Asia-Pacific, Middle East, and more
Resolution	203 dpi/8 dots per mm 300 dpi/12 dots per mm 600 dpi/24 dots per mm
Memory	256 MB RAM memory (4 MB user available) 512 MB Flash memory (64 MB user available)
Maximum Print Speed	356 mm per second
Print methods	Thermal transfer and direct thermal
Connection	Ethernet (additional Wi-Fi module available)
Temperature	+ 5 °C to + 41 °C
Size	269 mm x 324 mm x 495 mm (10.6 in x 12.8 in x 19.5 in)
Weight	16.3 kg (575 oz)

Specifications AdvanPrint large (SATO CL4NX 203)

Air Protocol Interface	EPC global UHF Class 1 Gen 2 / ISO 18000-6C
Supported region	868 MHz - 920 MHz
Resolution	203 dpi/8 dots per mm 305 dpi/12 dots per mm 609 dpi/24 dots per mm
Memory	2GB ROM, 256MB RAM for Linux OS 4MB ROM, 64 MB RAM for ITRON OS
Maximum Print Speed	254 mm per second
Print methods	Thermal transfer and direct thermal
Connection	Ethernet, Bluetooth Ver.3.0 (only for NA & EU) (additional Wi-Fi module available)
Temperature	0°C to + 40 °C
Size	271 mm x 457 mm x 321 mm (10.7 in x 18 in x 12.6 in)
Weight	15.1 kg (33 lbs)

Product codes for ordering

ADPR	-	M	-	FF	-	R	
							Model and Region
		ZD500R					
		ZEBRA-ZD50042	-	GB	-	T0E2R2FZ	Small, without WiFi, Global band
		ZEBRA-ZD50042	-	GB	-	T0E3R2FZ	Small, with WiFi, Global band
		ZEBRA-ZD50042	-	US	-	T012R1FZ	Small, without WiFi, US and Canada
		ZEBRA-ZD50042	-	US	-	T013R1FZ	Small, with WiFi, US and Canada
		ZEBRA-ZD50042	-	AP	-	T0P2R2FZ	Small, without WiFi, Asia Pacific
		ZEBRA-ZD50042	-	AP	-	T0P3R2FZ	Small, with WiFi, Asia Pacific
		ZEBRA-ZD50042	-	BR	-	T0A2R2FZ	Small, without WiFi, Brazil
		ZEBRA-ZD50042	-	CN	-	T092R2FZ	Small, without WiFi, China
		ZEBRA-ZD50042	-	JP	-	T082R3FZ	Small, without WiFi, Japan
		ZEBRA-ZD50042	-	MX	-	T012R2FZ	Small, without WiFi, Mexico
		ZT411					
		ZEBRA-ZT41142	-	GB	-	T0E00C0Z	Large, Global band, 203 dpi
		ZEBRA-ZT41143	-	GB	-	T0E00C0Z	Large, Global band, 300 dpi
		ZEBRA-ZT41142	-	US	-	T0100A0Z	Large, US and Canada, 203 dpi
		ZEBRA-ZT41143	-	AP	-	T0P00C0Z	Large, Asia Pacific, 203 dpi
		ZEBRA-ZT41143	-	AP	-	T0P00C0Z	Large, Asia Pacific, 300 dpi
		SATO					
		SATO-WWCL06060EU				-	Large

Examples:

ADPR-ZEBRA-ZD50042- GB-T0E2R2FZ:

- AdvanPrint
- Model: Zebra GB 203 dpi - ZD500 printer - ZD50042 - T0E2R2FZ

ADPR-SATO-WWCL06060EU:

- AdvanPrint
- Model: SATO CL4NX 203 dpi - WWCL06060EU



Copyright © Keonn Technologies S.L.
All rights reserved.

Information in this publication
supersedes all earlier versions.
Specifications subject to change
without notice.

